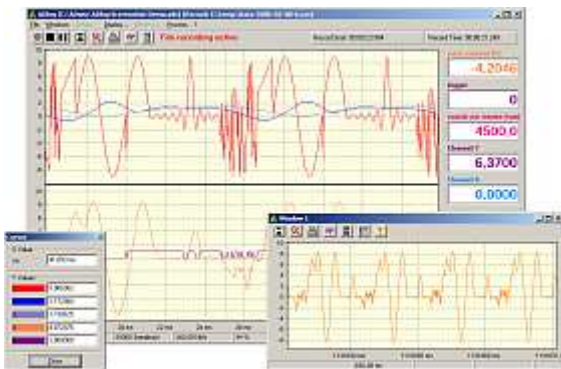


INFORMATION of ADlog

Your ADwin-System becomes a Data-Logger



With **ADlog** use **ADwin-Gold**, **ADwin-Pro** and **ADwin-light-16** flexibly and without programming effort-for recording, viewing and analyzing large amounts of data.

ADlog supports you in collecting your data from the beginning. The convenient graphical user you bring **ADlog** fast to use. Just download a complete configuration or adjust the **ADlog** settings to your exact measurement requirement.

Long time measurements made easy

ADlog measures automatically and continuously with total sample rates up to 4.8 MHz (e.g. 32 analog channels with 150 kHz), the data is transmitted at up to 8 MB / PC. In addition to the main screen you have 8 diagram windows for zooming and monitoring of individual channels. You can create, filter and display online channels calculated by combining measurement channels. Limits as well as pre- and post-trigger threshold values set according to your requirements.

All specifications - are permanently written to the hard disk - even while stopped graphical display. The maximum file size is adjustable. If several data files, so they are automatically numbered **ADlog**. The file formats are Excel, DIAdem, ASCII and binary files are available.